



Kubota Canada Ltd

ENGINE INFORMATION

Bulletin: OEM 07.01

Product Info: XXX

Service Info: XXX

Engineering Info:

Parts Info: XXX

Date: 1st March 2007

ref. G-07-001

SUBJECT: RULE CHANGE FOR ENGINE SERIAL NUMBER DESIGNATION

Page 1 of 1

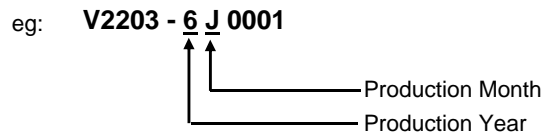
MODEL: ALL CURRENT ENGINE PRODUCTION
SERIAL No. AFFECTED: 7FA001 and after (Engines manufactured after March, 2007)

REASON FOR ISSUE:

As the numbers of engines production per model per month can now be expected to exceed 19999 units, the engine serial number identification system introduced in 1998 up to the present time can no longer be used. Due to this engine production volume, a modification has been made to the engine serial number identification system that will enable the identification of engine serial numbers up to 43974 units per model per month.

DETAIL:

- a. The characters before the "-" indicate the base engine model.
eg: **V2203 -**
- b. The first two characters after the "-" (numeric followed by alphabetic eg. 7A), denote the year and month of manufacture. This method of production date will remain unchanged.



Production Year	1998	1999	2000	2001	2002	2003	2004	2005	2006	2007	2008	2009	2010
Numerals or Letters	W	X	Y	1	2	3	4	5	6	7	8	9	A

Production Year	2011	2012	2013	2014	2015	2016	2017	2018	2019	2020	2021	2022	2023
Letters	B	C	D	E	F	G	H	J	K	L	M	N	P

Production Month	Jan	Feb	Mar	Apr	May	Jun	Jul	Aug	Sep	Oct	Nov	Dec
0001 ~ 9999	A	C	E	G	J	L	N	Q	S	U	W	Y
10000 ~ 19998	B	D	F	H	K	M	P	R	T	V	X	Z

- c. The last four digits of the serial number are sequential, identifying the individual engine.
eg: **6 J 0001**

therefore, serial production in May 2006

1 ~ 9,999	=	6J0001 ~ 6J9999
10,000 ~ 19,998	=	6K0001 ~ 6K9999

- d. This format has now been changed to accommodate higher production volumes.
For engines numbered after 19,998, immediately after the production month code, an alphabetical letter is substituted for the first character as the third digit. The letters "I" and "O" will be omitted.

for example: production in May 2007

1 ~ 9,999	=	7J0001 ~ 7J9999
10,000 ~ 19,998	=	7K0001 ~ 7K9999
19,999 ~ 20,997	=	7KA001 ~ 7KA999
20,998 ~ 21,996	=	7KB001 ~ 7KB999

After the 21996th unit of production, the third digit used would be **C**,
After the 22995th unit of production, the third digit used would be **D**, etc.

This bulletin is based on the most up-to date information available.

Specifications may and or will be changed or modified without notice.

revised 07/11 ws